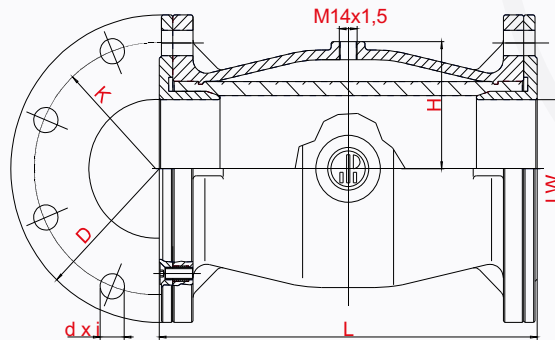


Products

Pinch Valve 500



PROKOSCH Pinch Valve No. 500

Dual-sided flange per DIN 2501.

The pneumatically activated PROKOSCH 500-series pinch valves were designed specifically for use in silo trucks. They are known for their strength, fewer individual parts and space-saving elements as well as their maintenance-free design. The free cylindrical pass reduces flow resistance to a minimum.

- ▶ Body made of a light alloy with generously dimensioned wall thickness. Flanges made of standard gray cast iron material. Each body is subjected to a burst test at 24 bar at the plant.
- ▶ Long service life due to highly abrasion-resistant sleeve made of NBR/SBR, fabric-reinforced and free cylindrical pass.
- ▶ Sleeve can also be provided in white food-substance quality and stainless steel flanges.
- ▶ Can be dismantled without special tools.
- ▶ Special designs regarding material and design are available upon request.

| Nom. width DN | LW | Dimensions | | | | | Air pressure | Air volume valve closed (l) | Weight (kg) |
|------------------|----|------------|-----|-----|------|----|--------------|-----------------------------|-------------|
| | | L | D | K | dxi | H | | | |
| 50 | 47 | 205 | 165 | 125 | 18x4 | 64 | 5 - 6 bar | 1,1 | 3,3 |
| 65 | 62 | 205 | 185 | 145 | 18x4 | 74 | 5 - 6 bar | 1,6 | 4,7 |
| 80 | 78 | 225 | 200 | 160 | 18x8 | 81 | 5 - 6 bar | 2,1 | 6,1 |
| 100 | 97 | 280 | 220 | 180 | 18x8 | 91 | 5 - 6 bar | 3,0 | 7,9 |

PROVEN & RELIABLE
FOR USE IN:

INDUSTRIAL

FUEL HANDLING

BULK HANDLING

TANK TRUCK CONSTR.

SILO TRUCK CONSTR.